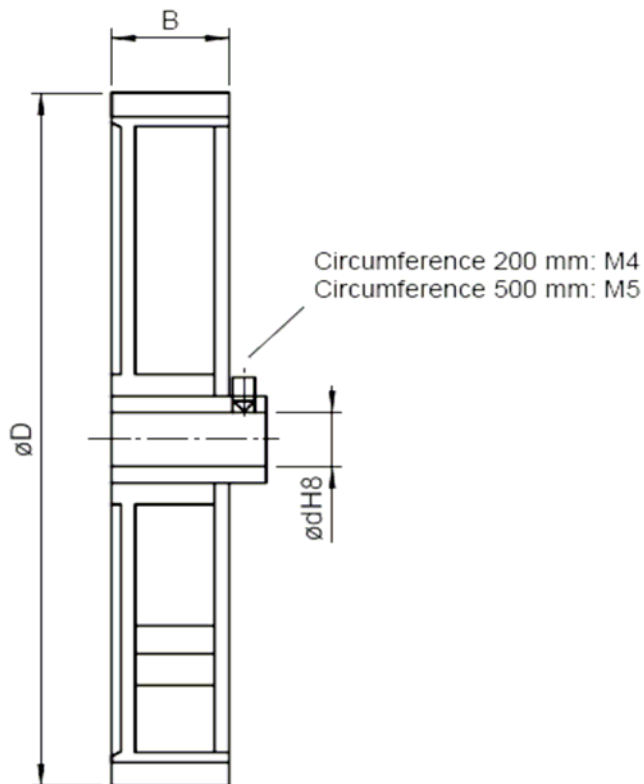




**Industrial Encoders
Direct Ltd**

MEASURING WHEELS

	Plastic Hytrel		Pimped Rubber		Knurled Aluminium		Knurled Plastic	
Circumference	200mm	500mm	200mm	500mm	200mm	500mm	200mm	500mm
D (Diameter)	64mm	159mm	64mm	159mm	64mm	159mm	64mm	159mm
B dimension	12mm	25mm	12mm	25mm	12mm	25mm	12mm	25mm
Bore(Max)Metric	10mm	12mm	10mm	12mm	10mm	12mm	10mm	12mm
Bore(Max)Imperial	3/8"	1/2"	3/8"	1/2"	3/8"	1/2"	3/8"	1/2"
Part Number	MWPH2- (Bore)	MWPH5- (Bore)	MWPR2- (Bore)	MWPR5 (Bore)	MWKA2- (Bore)	MWKA5- (Bore)	MWKP2- (Bore)	MWKP5- (Bore)



Ordering Example with Metric bore
Pimped Rubber
500mm Circumference
8mm Bore
Order Code: MWPR5-8

Ordering Example with Imperial bore
Pimped Rubber
500mm Circumference
1/2" Bore
Order Code: MWPR5-1/2

TEL: (UK) +44 (0) 1978 664722
FAX: (UK) +44 1978 664733
WEB: www.industrialencodersdirect.co.uk
EMAIL: sales@industrialencodersdirect.co.uk